






w a t e r m e t e r s

mod. **GMDX**
super-dry



-  **Mod.GMDX**
Getto multiplo, quadrante asciutto, lettura diretta. Realizzato nella versione per acqua fredda (30° C) nei calibri da Ø 13 a 50 mm (1/2" + 2"). Esclusi rischi di corrosione e sedimentazione. Dispositivo antimagnetico a richiesta. Garanzia di lunga durata ed elevata precisione.
-  **Mod.GMDX**
Vielfachwasserstrahl, trocken es Ziffernblatt, Direktablesung. Produziert in der Versionen Kaltwasser (30 Grad) in den Durchmessern von 13 bis 50 mm (1/2 Zoll + 2 Zoll). Die Risiken von Rost und Ablagerungen sind ausgeschlossen. Anti-magnetische Vorrichtung auf Anfrage. Garantiert lange Haltbarkeit und erhöhte Genauigkeit.
-  **Mod.GMDX**
Jets multiples, cadran sec à lecture directe, disponible en version eau froide (30°) et du calibre 13 au calibre 50 mm (de 1/2" à 2"), exclus tous problèmes de corrosion et d'incrustation, équipé d'un système antimagnétique sur demande, fiabilité dans le temps et précision élevée.
-  **Mod.GMDX**
Multi jet, dry dial, direct reading. Produced in the cold water version (30° c) in the diameters 13 to 50 mm (1/2" + 2"). Risks of corrosion and sedimentation are excluded. Antimagnetic insert upon request. Guaranteed long durability and elevated precision.
-  **Mod.GMDX**
Chorro múltiple, cuadro seco, lectura directa. Realizado en las versiones para agua fría (30° C) en los calibres de Ø 13 a 50 mm (1/2" + 2"). Libre de riesgos de corrosión y sedimentación. Bajo demanda se suministra con dispositivo antimagnético. Garantía de larga duración y elevada precisión.

Caratteristiche tecniche - Technical features

Calibro Size	DN	mm in	13 (1/2")	20 (3/4")	25 (1")	32 (1 1/4")	40 (1 1/2")	50 (2")
Portata massima Max flow rate	Q _{max}	m ³ /h	3	5	7	12	20	30
Portata nominale Nominal flow rate	Q _n	m ³ /h	1,5	2,5	3,5	6	10	15
Portata di transizione Transitional flow rate	Q _t ±2%	l/h	120	200	280	480	800	3000
Portata minima Min flow rate	Q _{min} ±5%	l/h	30	50	70	120	200	450
Sensibilità Sensibility		l/h	10	14	17	27	46	75
Letture minima Min reading		l	0,05	0,05	0,05	0,05	0,05	0,05
Letture massima Max reading		m ³	100.000	100.000	100.000	100.000	1.000.000	1.000.000
Pressione max di esercizio Max working pressure		bar	16	16	16	16	16	16

**Classe B-H
Class B-H**

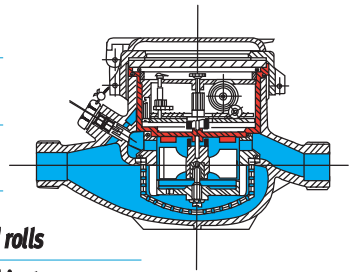
Acqua fredda 30°C
Cold water 30°C

Trascinamento magnetico
Magnetic transmission

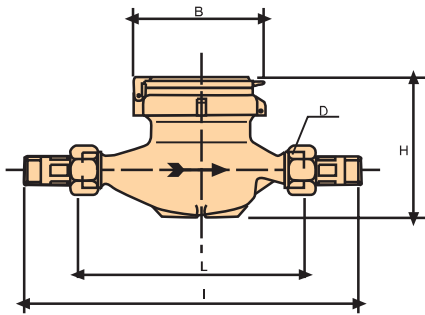
Letture diretta a rulli numeratori
Immediate reading by numerical rolls

Dispositivo antimagnetico su richiesta
Anti magnetic protection device on request

Orologeria superiore a tenuta
Water proof mechanism

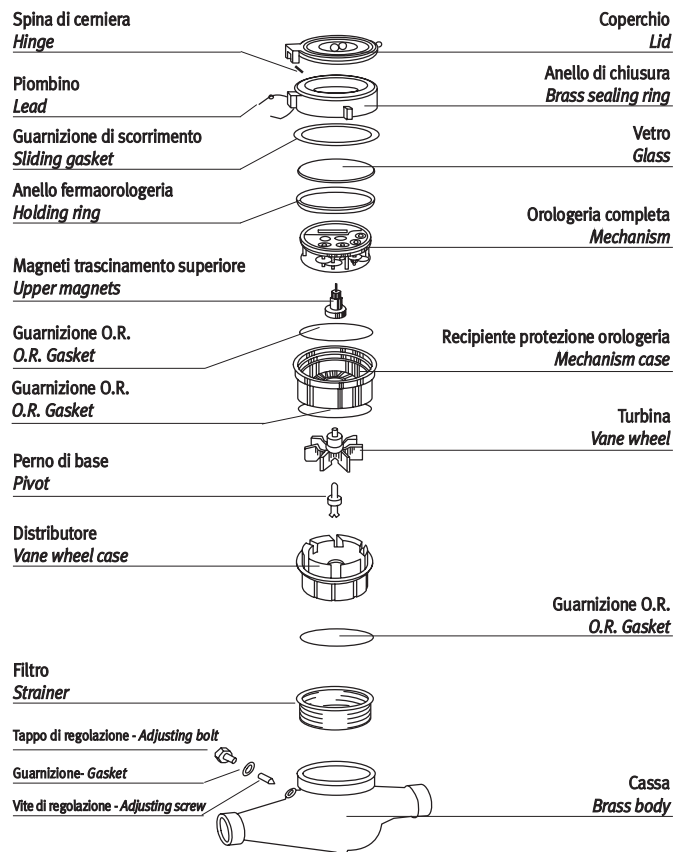


Dimensioni e pesi - dimensions and weights

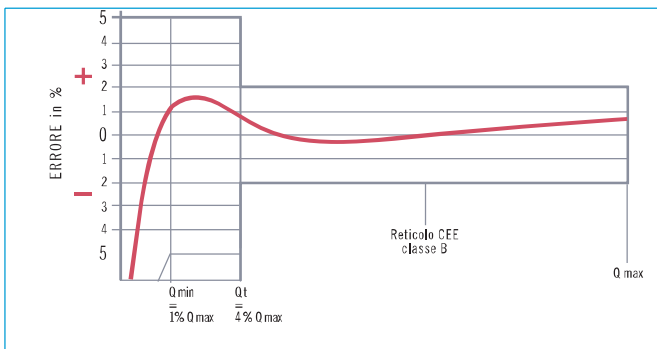


Calibro Size	mm in	13 1/2"	20 3/4"	25 1"	32 1 1/4"	40 1 1/2"	50* 2"
L	mm	145-165-190	190	260	260	300	300
I	mm	245	290	380	380	440	560
H	mm	109	111	117	117	153	172
B	mm	100	100	104	104	126	160
D	in	3/4"	1"	1 1/4"	1 1/2"	2"	2 1/2"
Pesi Weights	Kg	1,31	1,41	2,0	2,05	4,55	7,02

* I contatori ø 50 possono essere forniti flangiati secondo UNI 2223 PN 16
* The ø 50 meters can be supplied flanged according to UNI 2223 PN 16.



**Curva tipica degli errori dei contatori a turbina
Typical error curve of turbine meters**



**Curva delle perdite di carico dei contatori ø 13 e 50 mm
Loss of head curve of ø 13 and 50 mm. water meters**

