



The Split Core CTs with secondary @333mV allow you to have smart CTs with good performances at the right prices. The KCT series covers your needs from 30 to 600A. The integrated cable reduces the installation time.

Common technical features :

Split core measuring current transformer for primary up to 600 A

Secondary : 333mV

Secondary terminals : 1 mt cable integrated

Isolated plastic case recognized according to UL94-V0

Isolation category: CAT III

Protection level : 7.5V0-P

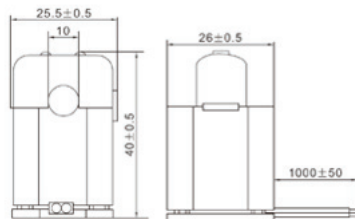
Rated frequency : 50/60 Hz

Operating temperature : -20°C...50°C

Accuracy (range 5-120%) : 0,5/1 %


QI-KCT-10-xxx/333

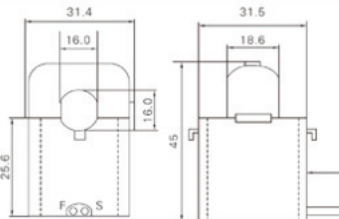
Hole window : Ø10mm



Primary Current	Max Current	Accuracy Class	Order code
30 A	80 A	1	QI-KCT-10-30/333
50 A	80 A	1	QI-KCT-10-50/333

QI-KCT-16-xxx/333

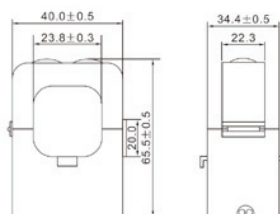
Hole window : Ø16mm



Primary Current	Max Current	Accuracy Class	Order code
80 A	240 A	0,5	QI-KCT-16-80/333
100 A	240 A	0,5	QI-KCT-16-100/333
200 A	240 A	1	QI-KCT-16-200/333

QI-KCT-24-xxx/333

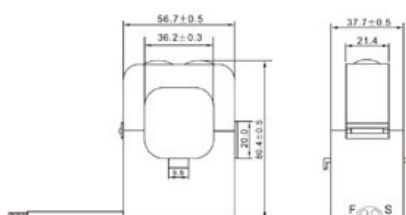
Hole window : Ø24mm



Primary Current	Max Current	Accuracy Class	Order code
100 A	480 A	0,5	QI-KCT-24-100/333
200 A	480 A	0,5	QI-KCT-24-200/333
300 A	480 A	0,5	QI-KCT-24-300/333

QI-KCT-36-xxx/333

Hole window : Ø36mm



Primary Current	Max Current	Accuracy Class	Order code
300 A	720 A	0,5	QI-KCT-36-300/333
400 A	720 A	0,5	QI-KCT-36-400/333
600 A	720 A	0,5	QI-KCT-36-600/333