



370-008  
version without display



370-009  
version with display

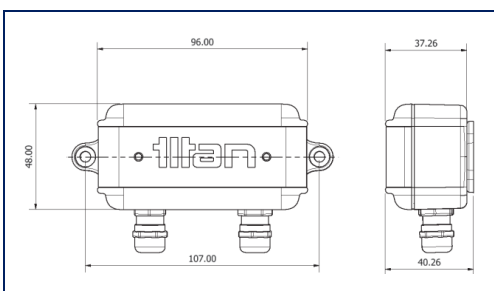
**FEATURES**

- Analog outputs: 4-20mA (active), 0-5Vdc, 0-10Vdc
- Pulse outputs: NPN and PNP logic direct outputs
- Output test signals via software
- Inputs: Pulse or Reed switch inputs
- Inbuilt sensor power supply (+5Vdc)
- Analog response rate from 100ms
- Inbuilt Linearisation
- ASCII data streaming of flow measurement
- User programmable settings; easy access USB
- Up to 10 point Calibration point input values
- Datalogging via PC
- Software indication for system set up
- Configurable flow alarm outputs
- LED indicators with LCD display option
- Display rate / total / both; local & remote reset
- Working temperature 0...65°C
- IP64 Enclosure
- Wall or panel mounting brackets

**IDEAL FOR**

- Integration for PLC
- Increased accuracy on mechanical device
- Flow retransmission signals
- Datalogging with PC Software
- Test rigs
- Control systems and flow alarms

**DRAWINGS AND DIMENSIONS**



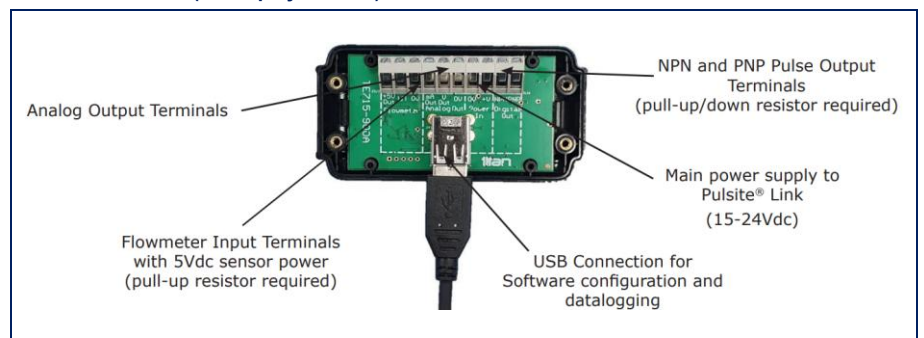
**DESCRIPTION**

The programmable Pulsite Link, available with an LCD display option, allows the user to convert standard pulse output flow meters to give linearised analog and NPN/PNP outputs. The device will accept both pulse and reed switch devices and provides 5Vdc to the installed flow meter. The display model enables local indication of flow rate, total or both, from the installed pulse flowmeter. A local and remote reset for the totaliser is also featured with the display option. Titan's Interface Software allows the user to configure and test the system via USB and a computer. Calibration data can be entered in order to linearise the flowmeter signal for greater accuracy. There is easy access to the USB connection to allow adjustment of settings without the need to uninstall the unit. The USB connection via the base port offers datalogging of parameters via PC and Titan's Interface Software. ASCII flow information can be directly received from the USB connection to ease installation for computer information systems if required.

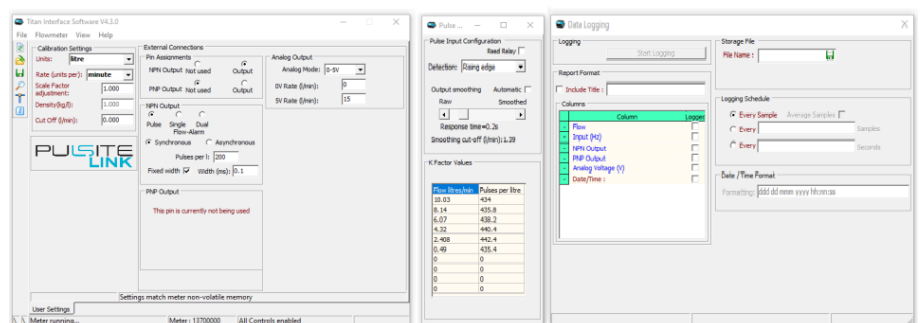
**GENERAL SPECIFICATIONS**

Power	15 + 24Vdc	regulated
Input	Digital pulse Reed switch	max 5 kHz max 400 Hz
Output	Pulse NPN-PNP 0-5V / 0-10Vdc 4-20mA ASCII flow data stream	2,5 kHz pull-up/down resistor required; 24Vdc 16 bit adjustable flow range 16 bit adjustable flow range 10 Hz
Response	Analog Pulse	automatic, 100ms, 1s or 10s option software min.0,1 ms pulse width
Pulse Output	3 types pulse and analog	frequency 50:50; direct 50:50; Direct fixed width
Linearisation	Pulse and Analog	10 point
Sensor Supply	5 Vdc	50mA max 20°C / 25mA max 65°C
LCD display	Reflective (not backlit)	Flow, total indicator gal, kg, gm, ltr, ml, per sec, min, hr 6x8mm high main characters: 2,5 mm enunciators
Datalogging	via USB	

**WIRING EXAMPLE (no display version)**



**SOFTWARE**



Titan's Interface Software supplied with the device allows the user to configure multiple outputs

**ORDER CODES**

<b>370-008</b>	Pulsite Link frequency-analog converter without display
<b>370-009</b>	Pulsite Link frequency-analog converter with display