

**MULTI POINT LEVEL INDICATOR WITH M12 CONNECTOR**

**USE:**

Built to ensure maximum safety with different control points in the tanks, hydraulic power packs containing mineral oil with a viscosity of not higher than 220 cSt; also suitable for diesel and other non-corrosive liquids and flammable.

**OPERATION:**

When the float of the race meets the reed switch incorporated in the tube at predetermined distance, the contact activated by the magnet housed in the float opens or closes, thus the opportunity to sending a signal booster light, acoustic or disconnecting any electrical equipment connected to it.

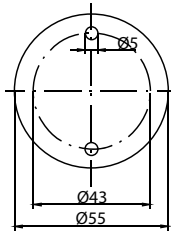
**ASSEMBLY:**

The indicator must be carried out in a vertical position, with the warning that the float from ferrous surfaces (walls, tanks, etc.). Minimum 35mm.

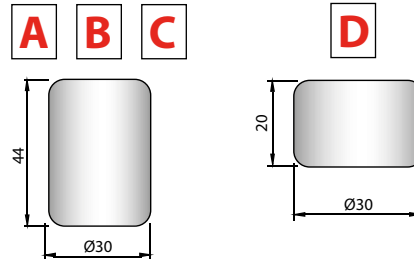
**NB:** the one shown in this drawing is only one version. Number of contacts and lengths are always performed at the request of the customer.

**Maximum operating pressure: 10 Bar**  
**Operating temperature: -20 ... +80 ° C**

ALUMINUM PROCESS CONNECTION



FLOATS



THERMOSTAT ELECTRICAL CHARACTERISTICS	
VOLTAGE	250 V. COMMUTABLE
FREQUENCY	50 Hz
LOAD VALUES	4,0 A. $\cos \varphi = 0,6$ (I M OT) 6,3 A. $\cos \varphi = 1,0$ (I N)
MAX. LOAD	10 A. $\cos \varphi = 1$
COMMUTATING TEMPERATURE	50°C - 60°C - 70°C - 80°C
CONTACTS	N.CH. = NORMALLY CLOSED N.A. = NORMALLY OPEN
TOLERANCES	± 5°C

ELECTRICAL CONTACTS	FLOAT	ELECTRICAL CHARACTERISTICS			
		POWER COMMUTABLE IN D.C.	POWER COMMUTABLE IN A.C.	CURRENT STRENGTH IN A.C.	COMMUTABLE VOLTAGE
SPST	A - B - C	80 W	80 V.A.	1,3 A	250 VDC / VAC
SPDT		50 W	50 V.A.	1 A	230 VDC / VAC
SPST	D	60 W	60 V.A.	3 A	230 VDC / VAC
SPDT		30 W		0,5 A	500 VDC

MOD.	"A"	FLOATS	CONTROL POINTS AND POLES OCCUPIED				TEMPERATURE SENSOR IN THE LOWER	POLES OCCUPIED	QUOTE AND NATURE OF THE CONTACTS IN THE PRESENCE OF LIQUID												
			POLES OCCUPIED						B	C	D	E									
			SPST	TEMPERATURE SENSOR	SPDT	TEMPERATURE SENSOR															
IEG-M12	FROM 70 TO 2500	A Ø30 x 44 YELLOW NYLON (DISTANCE BETWEEN POINTS 70 mm)	1	1 COMMON	2	2-3-4-5-6-7-8-9-10-11	3	4-5-6-7-8-9-10-11	1	WITHOUT	/	QUOTE +	QUOTE +	QUOTE +	QUOTE +						
			2	SEPARATE	2	2-3-4-5-6-7-8-9-10-11	3	4-5-6-7-8-9-10-11	2	PT 100	3										
		B Ø30 x 44 BLACK NBR (DISTANCE BETWEEN POINTS 70 mm)	1	1 COMMON	3	4-5-6-7-8-9-10-11	5	NO	NO	3	PT 1000	3	-	WITHOUT	-	WITHOUT	-	WITHOUT			
			2	SEPARATE	4					4	THERMOSTAT 50°C - NO	2	C	SPST N.C.	C	SPST N.C.	C	SPST N.C.	C	SPST N.C.	
		C Ø30 x 44 WHITE P.P. (DISTANCE BETWEEN POINTS 70 mm)	3	1 COMMON	4					5	THERMOSTAT 60°C - NO	2									
			3	SEPARATE	/	NO	/			NO	6	THERMOSTAT 70°C - NO	2								
		D Ø30 x 20 BLACK NBR (DISTANCE BETWEEN POINTS 35 mm)	4	1 COMMON	5		/				7	THERMOSTAT 80°C - NO	2	O	SPST N.O.	O	SPST N.O.	O	SPST N.O.	O	SPST N.O.
			4	SEPARATE	/		/				8	THERMOSTAT 50°C - NC	2								
											9	THERMOSTAT 60°C - NC	2	S	SPDT	S	SPDT				
											10	THERMOSTAT 70°C - NC	2								
											11	THERMOSTAT 80°C - NC	2								
IEG-M12	800	A	2	1						4	760-C	200-C	-	-	-	-					