

**MULTI POINT LEVEL INDICATOR**

**USE:**

Built to ensure maximum security with the different control points in the tanks, hydraulic power packs that contain mineral oils with a viscosity above 220 cSt, also suitable for diesel and other non-corrosive and flammable liquids.

**OPERATION:**

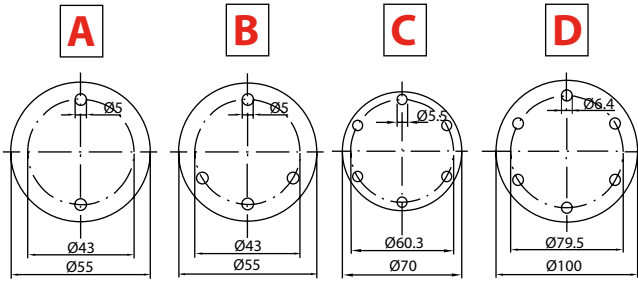
When the float of the indicator encounters the Reed switch at the pre-established point, the contact activated by the magnet housed in the float opens or closes, thus obtaining the possibility of sending a luminous or acoustic signal or activating or disconnecting any electrical equipment connected to it.

**FITTING:**

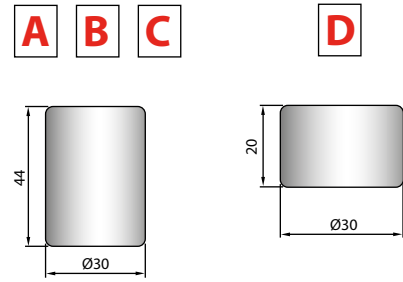
The indicator must be fitted in the vertical position, and the float must be at least 35mm from ferrous surfaces (walls, tanks, etc.).

**Max Pressure: 10 Bar**

ALUMINUM FITTING PROCESS



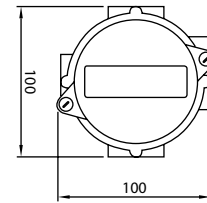
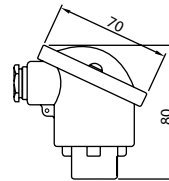
FLOATS



ELECTRICAL CONNECTIONS

1 IP68 ALUMINIUM HEAD

2 IP65 ALUMINIUM HEAD



THERMOSTAT ELECTRICAL CHARACTERISTICS	
VOLTAGE	250 V. COMMUTABLE
FREQUENCY	50 Hz
LOAD VALUES	4,0 A. cos φ = 0,6 (I M OT) 6,3 A. cos φ = 1,0 (I N)
MAX. LOAD	10 A. cos φ = 1
COMMUTATING TEMPERATURE	50°C - 60°C - 70°C - 80°C
CONTACTS	N.CH. = NORMALLY CLOSED N.A. = NORMALLY OPEN
TOLERANCES	± 5°C

ELECTRICAL CONTACTS	FLOAT	ELECTRICAL CHARACTERISTICS			
		POWER COMMUTABLE IN D.C.	POWER COMMUTABLE IN A.C.	CURRENT STRENGTH IN A.C.	COMMUTABLE VOLTAGE
SPST	A - B - C	80 W	80 V.A.	1,3 A	250 VDC / VAC
SPDT		60 W	60 V.A.	1 A	230 VDC / VAC
SPST	D	60 W	60 V.A.	3 A	230 VDC / VAC
SPDT		20 W	20 V.A.	1 A	150 VDC2 / VAC

MOD.	"A"	PROCESS CONNECTION	ELECTRICAL CONNECTION	FLOAT	TEMPERATURE CONTROL	OPERATING TEMPERATURE	N° POINTS OF CONTROL	ELECTRICAL CONNECTION		QUOTE AND NATURE OF CONTACTS IN THE PRESENCE OF LIQUID																																																														
								POLES OCCUPIED		B	C	D	E	F	G	H	I	L																																																						
								SPST	SPDT																																																															
IEG-MP	FROM 140 TO 2500	A Ø55 - 2 HOLE	1 6 POLI IP68	A Ø30 x 44 YELLOW NYLON (DISTANCE BETWEEN POINTS 70 mm)	1	WITHOUT	S	3	1 COMMON	4	7	QUOTE+	QUOTE+	QUOTE+	QUOTE+	QUOTE+	QUOTE+	QUOTE+	QUOTE+	QUOTE+	QUOTE+	QUOTE+																																																		
		B Ø55 - 3 HOLE			2	PT 100			SEPARATE	6	9																																																													
		C Ø70 - 6 HOLE			2 10 POLI IP65	B Ø30 x 44 BLACK NBR (DISTANCE BETWEEN POINTS 70 mm)			3	PT 1000	1 COMMON												5	9	-	WITHOUT	-	WITHOUT	-	WITHOUT	-	WITHOUT	-	WITHOUT	-	WITHOUT	-	WITHOUT																																		
		D Ø100 - 6 HOLE							4	THERMOSTAT 50°C - NO	SEPARATE												8	/																																																
		E 1" GAS			L... L CABLE	C Ø30 x 44 WHITE P.P. (DISTANCE BETWEEN POINTS 70 mm)			5	THERMOSTAT 60°C - NO	1 COMMON												6	/	C	SPST N.C.	C	SPST N.C.	C	SPST N.C.	C	SPST N.C.	C	SPST N.C.	C	SPST N.C.	C	SPST N.C.	C	SPST N.C.																																
		F 1 1/4 GAS							6	THERMOSTAT 70°C - NO	SEPARATE												10	/																																																
		G 1 1/4 NPT							7	THERMOSTAT 80°C - NO	1 COMMON												7	/																	O	SPST N.O.	O	SPST N.O.	O	SPST N.O.	O	SPST N.O.	O	SPST N.O.	O	SPST N.O.	O	SPST N.O.	O	SPST N.O.																
		H 1 1/2 GAS							8	THERMOSTAT 50°C - NC	SEPARATE												/	/																																																
									9	THERMOSTAT 60°C - NC	1 COMMON												8	/																																	S	SPDT	S	SPDT	S	SPDT	S	SPDT	S	SPDT	S	SPDT	S	SPDT	S	SPDT
									10	THERMOSTAT 70°C - NC	1 COMMON												9	/																																																
									11	THERMOSTAT 80°C - NC	1 COMMON												10	/																																																
IEG-MP 800	A	1	A	1			S	3	1	760-C	650-C	500-O	-	-	-	-	-	-	-	-	-	-	-	-																																																