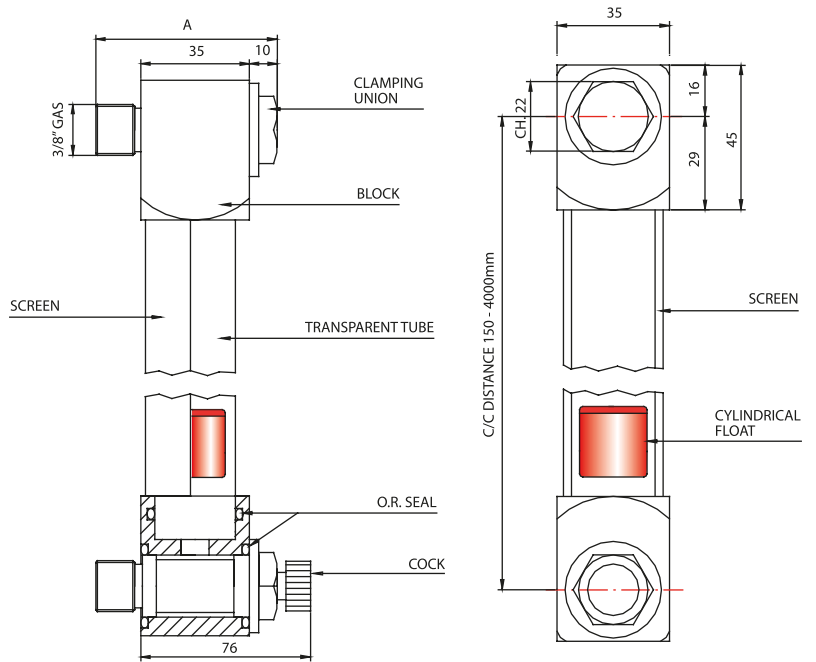


LUN



LMU



NYLON-GLASS HEADS      ALUMINIUM - STAINLESS STEEL HEADS

This type of visual level, medium-sized and high solidity, is normally composed of two bodies in which is houses a transparent tube, reinforced and protected by a half-round profile in anodised aluminium which also acts as a contrast screen.

- USE:**  
 Done to provide a visual control of liquids in tanks. Our levels are suitable for:  
 - Hydraulic power packs  
 - Tanks containing water, diesel oil, mineral oils with viscosity not higher than 220 cSt and all other liquid to the exclusion of acids or substances which are flammable.

**OPERATION:**  
 The principle used is that of communicating vessels: the liquid goes through the level gauge by means of hollow screws, showing the user the exact point inside the tank.

MODEL	C/C DISTANCE	TUBE MATERIAL TEMP. (°C)	HEAD TEMP. (°C)	FLOAT	LOWER CONNECTION	UPPER CONNECTION	THERMOMETER	OR MATERIAL TEMP. (°C)	NUT
LUN	FROM 150 TO 4000	A METHACRYLATE -40...+85	N NYLON-GLASS -30...+130	1 NYLON-GLASS (RED)	A BRASS PLATED SCREW A=58	A BRASS PLATED SCREW A=58	S WITHOUT	1 NBR -30...+100	A WITHOUT
					B BRASS PLATED SCREW A=68	B BRASS PLATED SCREW A=68		2 FKM (VITON) -25...+200	
					C AISI316 S/STEEL SCREW A=58	C AISI316 S/STEEL SCREW A=58		3 EPDM -45...+140	
		P PYREX -70...+250	N NYLON-GLASS -30...+130	2 NBR (BLACK)	RO BRASS PLATED TAP OPEN/DOWNLOAD/CLOSE	RO BRASS PLATED TAP OPEN/DOWNLOAD/CLOSE	T BIMETALLIC PLUGGED IN TO LOWER SCREW (EXCLUDES RO - R1 - R2) USED ONLY WITH CONNECTIONS LOWER A - C	4 SI (SILICONE) -60...+200	B GALVANIZED STEEL
					R1 BRASS PLATED TAP OPEN/CLOSE	R1 AISI316 S/STEEL TAP OPEN/CLOSE		5 FEP -60...+205	
					R2 AISI316 S/STEEL TAP OPEN/DOWNLOAD/CLOSE	R2 AISI316 S/STEEL TAP OPEN/DOWNLOAD/CLOSE		6 HNBR -40...+130	
3 WITHOUT			T ALUMINIUM CAP WITH BREATHER	T ALUMINIUM CAP WITH BREATHER					
LUN	800	A	N	1	A	A	S	1	A

MODEL	C/C DISTANCE	TUBE MATERIAL TEMP. (°C)	HEAD TEMP. (°C)	FLOAT	LOWER CONNECTION	UPPER CONNECTION	THERMOMETER	OR MATERIAL TEMP. (°C)	NUT
LMU	FROM 150 TO 4000	A METHACRYLATE -40...+85	A ANODISED ALUMINIUM	1 NYLON-GLASS (RED)	A BRASS PLATED SCREW A=58	A BRASS PLATED SCREW A=58	S WITHOUT	1 NBR -30...+100	A WITHOUT
					B BRASS PLATED SCREW A=68	B BRASS PLATED SCREW A=68		2 FKM (VITON) -25...+200	
					C AISI316 S/STEEL SCREW A=58	C AISI316 S/STEEL SCREW A=58		3 EPDM -45...+155	
		P PYREX -70...+250	I STAINLESS STEEL	2 NBR (BLACK)	RO BRASS PLATED TAP OPEN/DOWNLOAD/CLOSE	R1 BRASS PLATED TAP OPEN/CLOSE	T BIMETALLIC PLUGGED IN TO LOWER SCREW (EXCLUDES RO - R1 - R2) USED ONLY WITH CONNECTIONS LOWER A - C	4 SI (SILICONE) -60...+200	B GALVANIZED STEEL
					R1 BRASS PLATED TAP OPEN/CLOSE	R2 AISI316 S/STEEL TAP OPEN/DOWNLOAD/CLOSE		5 FEP -60...+205	
					R2 AISI316 S/STEEL TAP OPEN/DOWNLOAD/CLOSE	T ALUMINIUM CAP WITH BREATHER		6 HNBR -40...+130	
3 WITHOUT			T1 AISI316 S/STEEL CAP WITH BREATHER	T1 AISI316 S/STEEL CAP WITH BREATHER					
LMU	800	A	A	1	A	A	S	1	A