



**M12 connector version**



**DIN connector version**

The FPT 8236 pressure transmitter impresses with an absolutely smooth and robust flush-mounted measuring diaphragm made of corrosion-resistant duplex steel. The thin-film-on-steel sensor technology ensures a wide temperature range and excellent long-term stability.

### Applications

- Machine tools
- Food Industry
- Process technology
- Water treatment
- Hydraulics

### Features

- Flush membrane with smooth and plain surface
- Membrane in Duplex steel 1.4462
- Completely welded sensor system
- Excellent long-term stability

Technical Data			
Measuring principle	Thin-film-on-steel	Accuracy @ 25°C typ.	± 0.5 % FS typ.
Measuring range	-0.5 ... 0.5 to 0 ... 100 bar -5 ... 10 to 0 ... 1500 psi	Media temperature	-10°C ... +125°C
Output signal	4 ... 20 mA, 0 ... 5 VDC, 1 ... 6 VDC, 0 ... 10 VDC, 0.5 ... 4.5 VDC ratiometric	Ambient temperature	-10°C ... +125°C Cable PUR: -10°C ... +70°C
NLH @ 25°C (BSL) typ.	± 0.1 % FS typ.		

Ordering information/type code

				8236 .			XX	XX	XX	XX	XX
Measuring range <sup>1)</sup>	Pressure measurement range [bar]	Over pressure [bar]	Burst pressure [bar]	Pressure measurement range [psi]	Over pressure [psi]	Burst pressure [psi]					
		-0.4 ... 0.6	5	7.5	A6	-5 ... 10	60	90	F5		
	-0.5 ... 0.5	5	7.5	A7							
	0 ... 1	5	7.5	71	0 ... 15	60	90	G1			
	0 ... 2.5	5	7.5	75	0 ... 30	60	90	G5			
	0 ... 4	8	12	76	0 ... 50	100	150	G6			
	0 ... 6	12	15	77	0 ... 100	200	250	G7			
	0 ... 10	20	25	78	0 ... 150	300	375	G8			
	0 ... 16	32	40	79	0 ... 250	500	625	G9			
	0 ... 25	50	75	80	0 ... 400	800	1200	H0			
	0 ... 40	80	100	81	0 ... 500	1000	1250	H1			
	0 ... 100	200	300	83	0 ... 1500	3000	4500	H3			
<b>Sensor</b>	Relative pressure									23	
<b>Pressure connection</b>	G1/2" male, flush membrane									93	
<b>Electrical connection</b>	Male electrical connector EN 175301-803-A (DIN 43650-A), Mat. PA									05	
	Male electrical connector M12x1, 5-pol., Mat. PA									35	
	Male electrical connector Packard Metri Pack									51	
	Cable PUR (Screwed cable gland PA 6-3), -10°C ... +70°C <sup>3) 4)</sup>									24	
<b>Output signal</b>	<b>Signal output</b>	<b>Load resistance</b>	<b>I (supply)</b>		<b>U (supply)</b>						
	4 ... 20 mA	(U <sub>supply</sub> -9 V) / 20 mA	< 10 mA		9 ... 32 VDC		19				
	0 ... 5 VDC	> 2.5 kΩ	< 10 mA		9 ... 32 VDC		14				
	1 ... 6 VDC	> 5.0 kΩ	< 10 mA		9 ... 32 VDC		16				
	0 ... 10 VDC	> 5.0 kΩ	< 10 mA		15 ... 32 VDC		17				
	0.5 ... 4.5 VDC ratiometric	> 5.0 kΩ	< 10 mA		5 (4.75 ... 5.25) VDC		23				
<b>Accessories</b>	Seal FKM									61	
	Female electrical plug EN 175301-803-A (DIN43650-A)/NBR, -40°C ... +90°C, for cable diameter 4 ... 9 mm, flammability standard UL94-V0									46	
	Female electrical plug EN 175301-803-A (DIN 43650-A)/silicone, -40°C ... +125°C, for cable diameter 4 ... 9 mm, flammability standard UL94-V0									56	
	Female electrical plug EN 175301-803-A (DIN43650-A)/NBR, -40°C ... +90°C, for cable diameter 4 ... 9.5 mm, flammability standard UL94-V2									58	
	Female electrical plug M12x1, 5-pole									33	
	Special electrical connection: Pin 1 +, Pin 2 - (only for output signal 4 ... 20 mA and male electrical connector EN175301-803-A / DIN43650-A) <sup>2)</sup>									92	
	Special electrical connection: Pin 1 Out, Pin 2 -, Pin 3 + (only for output 14, 16, 17, 23 and male electrical connector EN175301-803-A / DIN43650-A) <sup>2)</sup>									98	
	Special electrical connection: Pin 1 +, Pin 2 -, Pin 3 Out (only for output signals 14, 16, 17, 23 and male electrical connector EN 175301-803-A / DIN 43650-A) <sup>2)</sup>									97	
	Special electrical connection: Pin 1 +, Pin 3 -, Pin 5 GR (only for output 4...20mA and male electrical connector M12x1, 5-pol.) <sup>2)</sup>									94	
	Special electrical connection: Pin 1 +, Pin 3 - (only for output 4 ... 20 mA and male electrical connector Packard Metri Pack 3-poles)									E4	
	Special electrical connection: Pin 1 +, Pin 3 - (only for male electrical connector Packard Metri Pack 3-poles) <sup>2)</sup>									99	
	Housing nut for electrical connection EN175301-803-A (DIN43650-A) secured with Loctite (max. 85°C)									L9	
	Cable length 1.5 m									1M	
	Cable length 3.0 m									3M	
	Cable length 5.0 m									5M	

<sup>1)</sup> Extended overpressure as well as customized pressure ranges upon request

<sup>2)</sup> Details see electrical connection

<sup>3)</sup> Cable length see accessories (max. length 50 m, in 5-meter sections)

<sup>4)</sup> IP68, max. 3 m, Media +10°C ... +35°C

Standard products (extra short lead time)					
Product No.	Type Code	Pressure range [bar]	Over pressure max. [bar]	Signal output	Accuracy @ 25°C typ. [%]
FPT1.0A	8236 71 2393 05 0000 0000 19 58 61	0 ... 1	5	4 ... 20 mA	± 1.0
FPT2.5A	8236 75 2393 05 0000 0000 19 58 61	0 ... 2.5	5	4 ... 20 mA	± 0.5
FPT4.0A	8236 76 2393 05 0000 0000 19 58 61	0 ... 4	8	4 ... 20 mA	± 0.5
FPT6.0A	8236 77 2393 05 0000 0000 19 58 61	0 ... 6	12	4 ... 20 mA	± 0.5
FPT10.0A	8236 78 2393 05 0000 0000 19 58 61	0 ... 10	20	4 ... 20 mA	± 0.5
FPT16.0A	8236 79 2393 05 0000 0000 19 58 61	0 ... 16	32	4 ... 20 mA	± 0.5
FPT25.0A	8236 80 2393 05 0000 0000 19 58 61	0 ... 25	50	4 ... 20 mA	± 0.5
FPT40.0A	8236 81 2393 05 0000 0000 19 58 61	0 ... 40	80	4 ... 20 mA	± 0.5
FPT100.0A	8236 83 2393 05 0000 0000 19 58 61	0 ... 100	200	4 ... 20 mA	± 0.5
FPT1.0M	8236 71 2393 35 0000 0000 19 33 61	0 ... 1	5	4 ... 20 mA	± 1.0
FPT2.5M	8236 75 2393 35 0000 0000 19 33 61	0 ... 2.5	5	4 ... 20 mA	± 0.5
FPT4.0M	8236 76 2393 35 0000 0000 19 33 61	0 ... 4	8	4 ... 20 mA	± 0.5
FPT6.0M	8236 77 2393 35 0000 0000 19 33 61	0 ... 6	12	4 ... 20 mA	± 0.5
FPT10.0M	8236 78 2393 35 0000 0000 19 33 61	0 ... 10	20	4 ... 20 mA	± 0.5
FPT16.0M	8236 79 2393 35 0000 0000 19 33 61	0 ... 16	32	4 ... 20 mA	± 0.5
FPT25.0M	8236 80 2393 35 0000 0000 19 33 61	0 ... 25	50	4 ... 20 mA	± 0.5
FPT40.0M	8236 81 2393 35 0000 0000 19 33 61	0 ... 40	80	4 ... 20 mA	± 0.5
FPT100.0M	8236 83 2393 35 0000 0000 19 33 61	0 ... 100	200	4 ... 20 mA	± 0.5

Accuracy				
Pressure measuring range		≥ 0 ... 2.5 bar ≥ 0 ... 30 psi		< 0 ... 2.5 bar < 0 ... 30 psi
		TEB @ -25 ... +85°C	[% FS typ.]	± 1.5
Accuracy @ +25°C	[% FS typ.]	± 0.5 <sup>1)</sup>	± 1.0 <sup>2)</sup>	
Additional mounting torque offset	[% FS typ.]	± 0.2	± 0.5	
NLH @ +25°C (BSL)	[% FS typ.]	± 0.1	± 0.2	
TC zero point and span	[% FS/K typ.]	± 0.01	± 0.025	
Long term stability 1 year @ +25°C	[% FS typ.]	± 0.2	± 0.5	

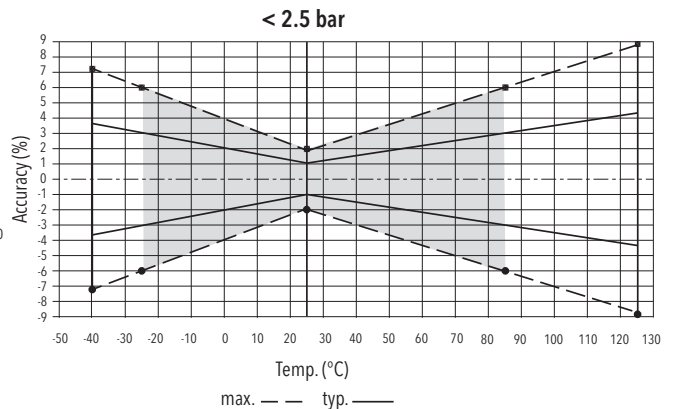
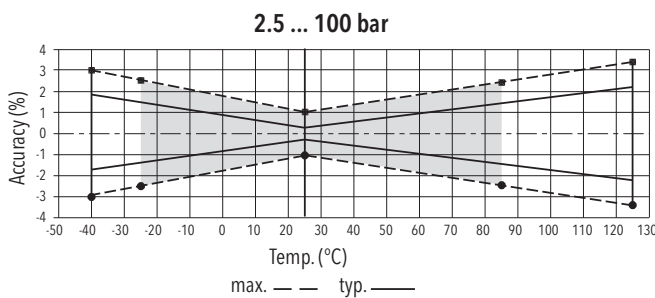
<sup>1)</sup> Additional mounting torque offset 0.2 %

<sup>2)</sup> Additional mounting torque offset 0.5 %

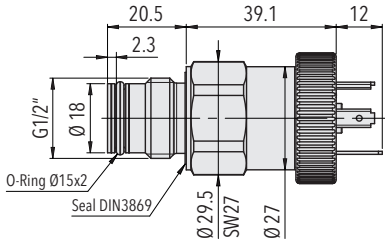
Specifications		
Electrical data	Output / supply voltage	4 ... 20 mA: 24 (9...32) VDC 0 ... 5 VDC: 24 (9...32) VDC 1 ... 6 VDC: 24 (9...32) VDC 0 ... 10 VDC: 24 (15...32) VDC 0.5 ... 4.5 VDC ratiometric 10 ... 90 % $U_{supply}$ : $5 \pm 0.25$ VDC
	Rise time	Typ. 1 ms / 10 ... 90 % nominal pressure
	Power-on delay time	100 ms
	Inverse-polarity protection, short-circuit strength @ 25°C during 5 min.	4 ... 20 mA: to $U_s = 32$ VDC 0 ... 10 VDC, 0 ... 5 VDC, 1 ... 6 VDC: to $U_s = 28$ VDC 0.5 ... 4.5 VDC ratiometric: to $U_s = 14$ VDC
	Environmental conditions	
	Media temperature	-10°C ... +125°C
	Ambient temperature	-10°C ... +125°C Cable PUR: -10°C ... +70°C
	Protection <sup>1)</sup>	IP65, IP67, IP68
	Vibration	15 g RMS (20...2000 Hz) acc.to EN 60068-2-64 25 g sin (80...2000 Hz), 1 oct./min, (1x @ 25°C) acc.to EN 60068-2-6
	Shock	50 g / 11 ms
EMC protection	Emission	EN/IEC 61000-6-3
	Immunity	EN/IEC 61000-6-2
Mechanical data	Sensor (wetted parts)	1.4462 (AISI318 LN)
	Pressure connection (wetted parts)	1.4462 (AISI318 LN), 1.4542
	Housing	1.4542
	Sealing	FPM (FKM)
	Weight	~ 80 ... 110 g (without cable)
	Mounting torque	20 ... 25 Nm not lubricated 15 ... 20 Nm lubricated

<sup>1)</sup> See electrical connection

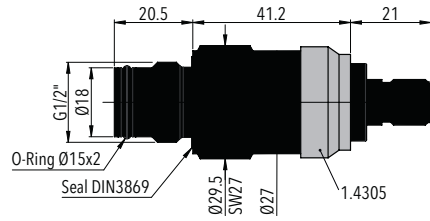
## Measuring accuracy



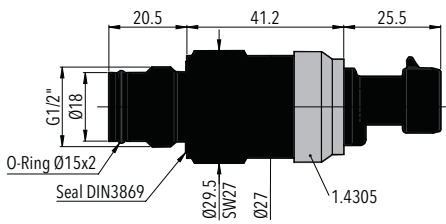
Dimensions



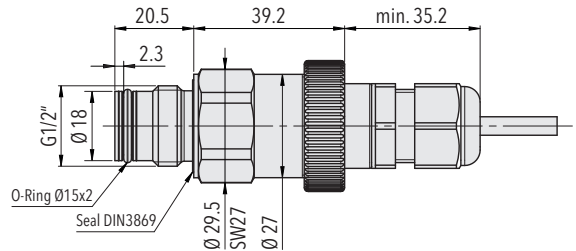
8236.XX.XX.93.05.XX.XX



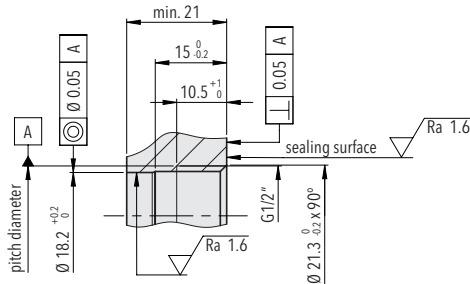
8236.XX.XX.93.35.XX.XX



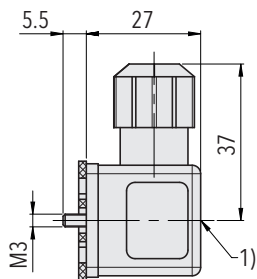
8236.XX.XX.93.51.XX.XX



8236.XX.XX.93.24.XX.XX

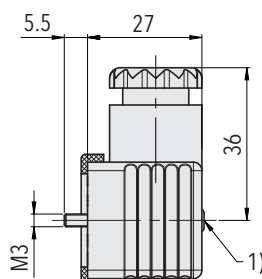


Mounting thread G1/2"  
DIN EN ISO 1179-1



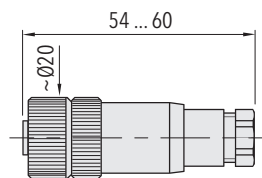
1) Tightening torque 50...60 Ncm

8236.XX.XXXX.XX.XX.46/56

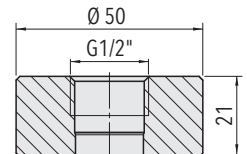


1) Tightening torque 50...60 Ncm

8236.XX.XXXX.XX.XX.58



8236.XX.XXXX.XX.XX.33



Welding flange for G1/2"  
AISI 316L (1.4404/1.4435)  
Ordering No. F82060

Electrical connection

		Protection / electrical connection							
		IP65*) **)		IP67/IP68 **) max. 3m		IP67*) **)		IP67*) **)	
		Industrial standard EN175301-803A <b>05</b>		Cable <b>24</b>		M12x1 5-pole <b>35</b>		Packard Metri Pack 3-pole <b>51</b>	
Output signal	<p><b>8236.XX.XXXX.XX.19</b></p>	Standard	<b>92</b>			Standard	<b>94</b>		<b>E4</b>
	<p><b>8236.XX.XXXX.XX.14/16/17/23</b></p>	Standard	<b>98</b>	<b>97</b>					<b>99</b>
		2	1		white	4	1	1	1
		1	2		brown	1	3	2	3
		⊕	⊕		yellow	5	5		
		2	3	1	white	2		1	1
		3	1	3	green	4		3	2
		1	2	2	brown	3		2	3
		⊕	⊕	⊕	yellow	5			

\*) Electrical connections 05/35/51: provided female electrical plug is mounted according to instructions

\*\*) Ventilation via male electric plug/cable end

\*\*\*) Only cable versions or female electrical plug with shield connection